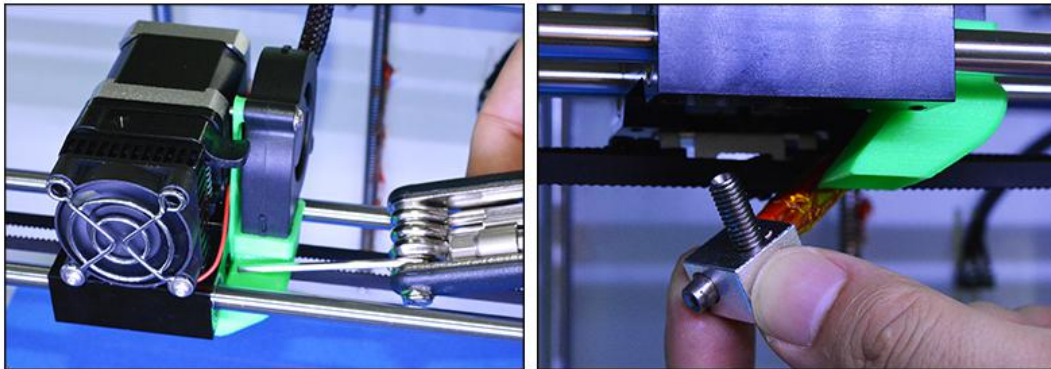


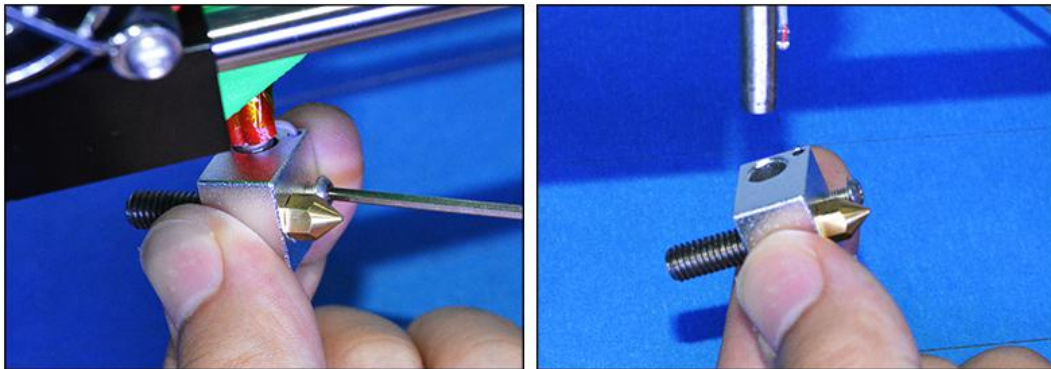
Change nozzle and Clear filament stuck

Change nozzle

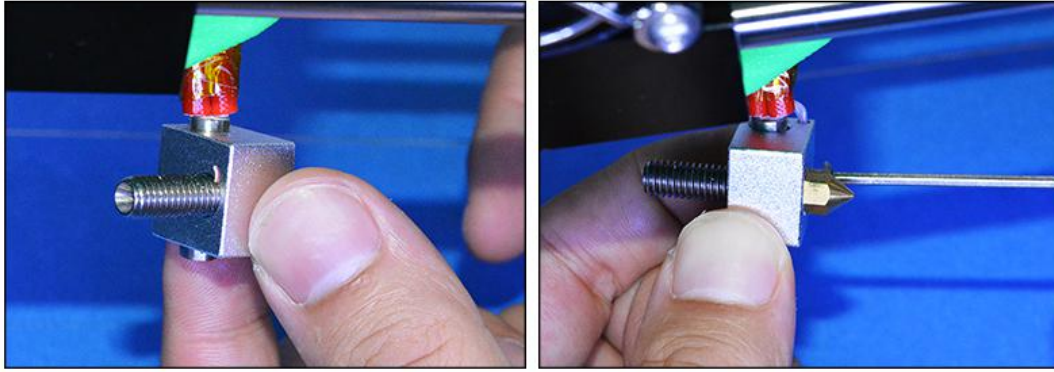
1. Unscrew extruder screw, take out the nozzle suite,as picture.



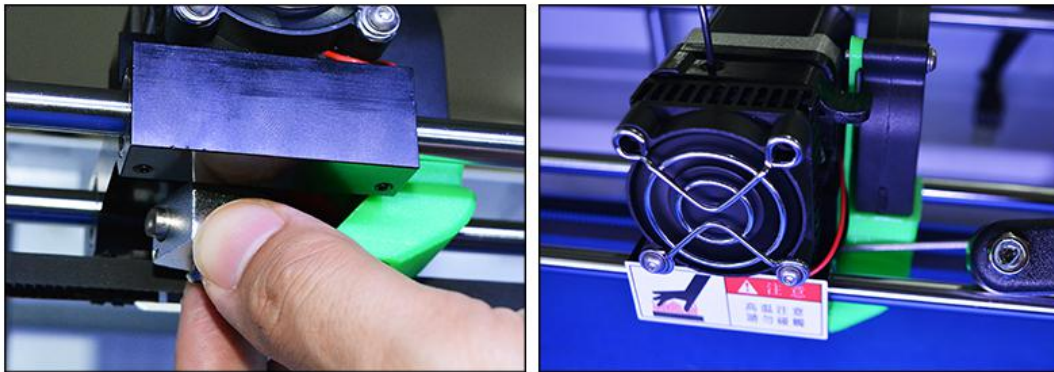
2. Unscrew the screw of square aluminum,take out the broken nozzle part.



3. Change the new nozzle suite,screw the square aluminum.

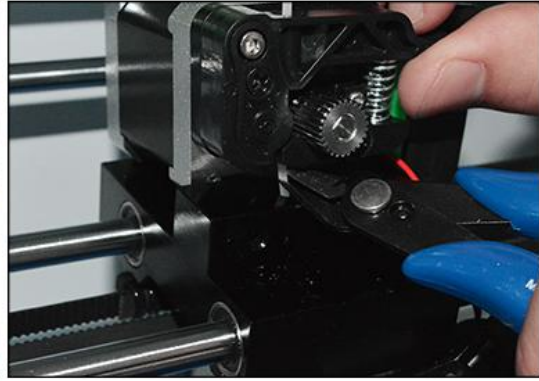
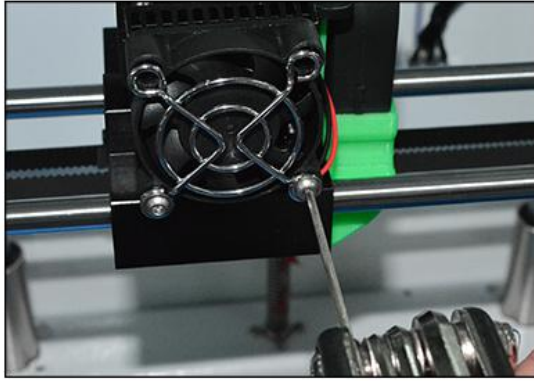


4. Assembling the nozzle suite into the extruder, push it to the deepest place, then unscrew the screw of extruder.

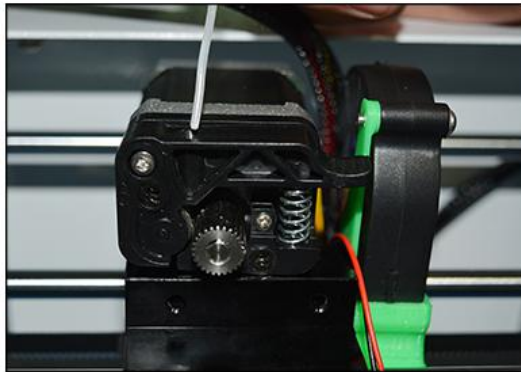
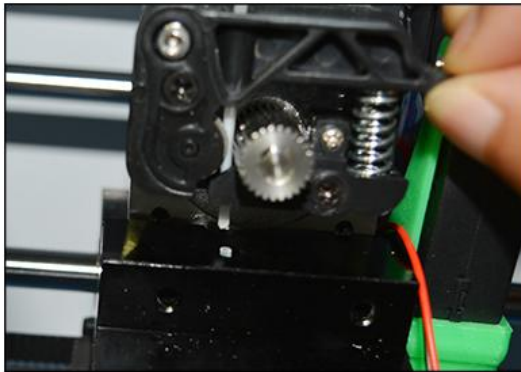


Clear stuck filament

1. Unscrew the screw of square fan, take out the fan, use nipperto cut filament.

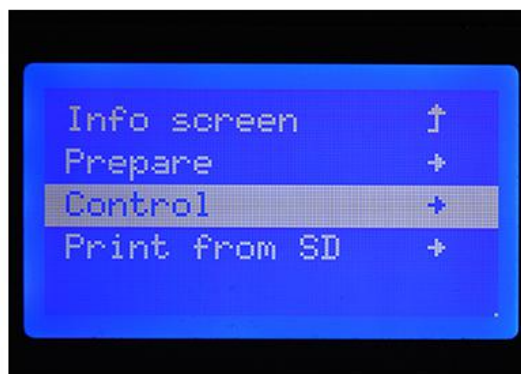


2. After cutting the filament,press the switch,pull out the filament.



12864 LCD screen

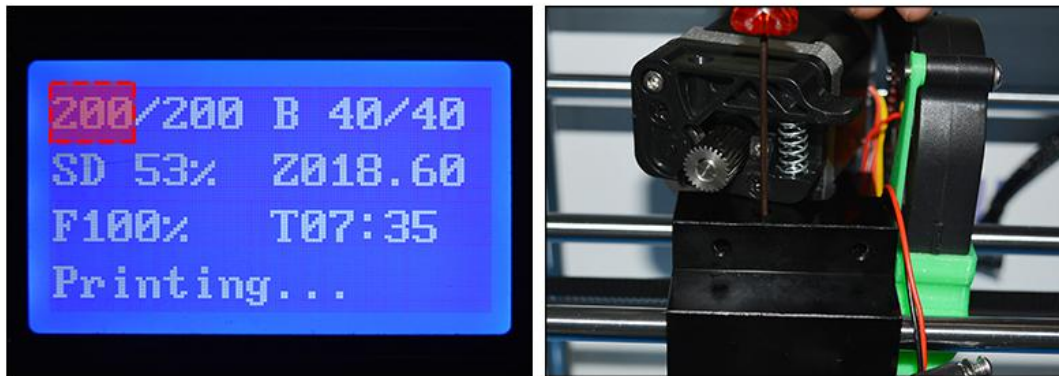
3.Main menu,choose<Control>



4. Enter<Control>,choose<Temperature> -<Nozzle>,set it 200°C.

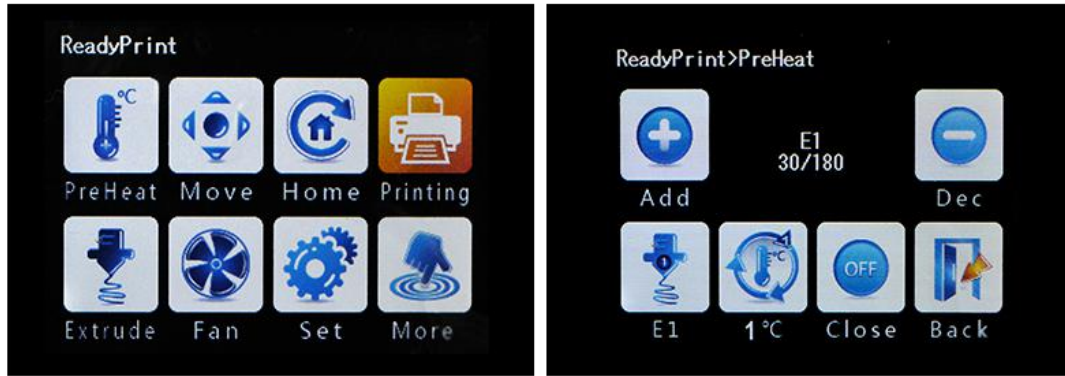


5. When nozzle temperature reach 200°C , use tool clear the nozzle.



Touch screen

3.Main menu , choose <PreHeat> , Enter<PreHeat> , choose<E1> , preheat temperature 200°C.



4. When nozzle temperature reaches 200°C, use tool to clear the nozzle.



5. Clear the filament in the nozzle all out, then assemble all parts back.

